



English

# FLOWER SERIES

## Tending Guide

SEED KIT TYPE: \_\_\_\_\_

PLANTING DATE: \_\_\_\_\_



# C O N T E N T S

---

## Planting Your Garden

Plant Your Garden .....	2
-------------------------	---

## Tending Your Garden

Remove Domes .....	3
Add Water.....	4
Feed Garden .....	4
Raise Lamp Hood ( <i>Light[s]</i> ).....	5
Keep Your Garden Healthy.....	5
Plant Problems & Remedies.....	14

## Appendices

Reminders About Planting Your Garden.....	15
Questions & Answers – Light(s) .....	16
Set Your Light Timer .....	16
Troubleshooting .....	17
Replace Bulb(s).....	19

Whether this is the first or fifth garden you are planting in your AeroGarden, you will need to reference your *Quick Start Guide*.

If you have planted a garden in your AeroGarden prior to this one, please refer to “*Replanting Your AeroGarden*” in the *Quick Start Guide* before you proceed.

If you no longer have your *Quick Start Guide* you can obtain a copy of it at  
**[www.aerogardensupport.com](http://www.aerogardensupport.com)**

# PLANTING YOUR GARDEN

A little bit of care for your Garden will ensure rapid growth and beautiful blooms. You will see sprouts within 2 weeks. In 6-10 weeks your plants will start to flower. Shortly after that, you will have a garden full of gorgeous blossoms.

## Plant Your Garden

Each *Flower Series Seed Kit* (except Cascading Petunias) comes with *Seed Pods* that are labeled, *Tall*, *Medium* or *Short*. This helps to determine the best position for each *Seed Pod* in the *Grow Surface*, ensuring each plant gets enough light and has room to grow.

The following are descriptions of each plant height and the best locations for them in your AeroGarden. Consult your *Quick Start Guide* for model-specific planting instructions.

- Tall plants tend to grow faster and branch out quickly – they do best in **Back** openings.
- Medium plants grow a little more slowly and/or tend to be a bit bushier – they do best when planted in **Side** openings.
- Short plants are slower growing and/or mature into smaller plants – they are best suited for growing in a **Front** opening.



**NOTE:** *Flowers need a daily dark period to produce blooms. If your Garden is in a place that receives any room light (natural or artificial), we recommend that you set your light(s) to be on during the day. If the option is available to change the time your light(s) go off, instructions will be found in the, "Personalize Your Light Timer" section of the Quick Start Guide.*

# TENDING YOUR GARDEN

Please take a moment to review this section shortly after planting your Garden (see page 15 for *Reminders About Planting Your Garden*).

## Remove Domes

- A few days after planting your AeroGarden, tiny plants will appear through the holes in each *Seed Pod Label*. When this occurs, remove the *Domes* from each *Seed Pod* with emerging plants and discard or recycle. Do not remove the *Label*!
- To reduce plant stress, we recommend removing the *Domes* shortly after the light(s) turns off or near the end of the light cycle.
- You do not need to thin your plants as the AeroGarden can support multiple plants in each *Seed Pod*.



Each *Seed Pod Label* shows the number of days until seeds sprout.



**Don't let this happen!**  
If your plant is curled inside the *Dome*, it was left on too long. **Immediately remove Dome.**

Never remove *Labels*. They promote germination, inhibit algae growth and identify your plants.

# Add Water

---

**There should always be water in the Bowl of your AeroGarden.** For instructions, see the “Add Water Using a Spouted Container” section in your *Quick Start Guide*.

- Use room-temperature water. Very hot or very cold water will hurt your plants.
- We recommend using municipal tap, bottled or purified water. Well or softened water **SHOULD NOT** be used because the extra minerals in these sources may be harmful to aeroponically grown plants.

**Quick Start Guides available at:  
[www.aerogardensupport.com](http://www.aerogardensupport.com)**

# Feed Garden

---

**Every 2 weeks you will need to add one nutrient tablet (3-pod AeroGardens) or two nutrient tablets (6- or 7-pod AeroGardens) to the Bowl.** For instructions, see “Add Nutrients” (*Feed Garden - Basic Feeding*) in the *Control Panel Features* section of your *Quick Start Guide*.



All *Flower Series Seed Kits* have two types of nutrients – “Starting Nutrients” and “Growing Nutrients.” The one exception to this is the *Cascading Petunias Seed Kit*, which also has “Flowering Nutrients.”

For *Cascading Petunias*, follow the instructions in your *Quick Start Guide* using “Growing Nutrients” for first feeding after planting and then “Flowering Nutrients” for remaining feedings.

*Note: We recommend checking for bugs every time you add nutrients. See Troubleshooting on page 18 of this Guide for details.*

## Raise Lamp Hood (*Light[s]*)

---

**As your plants begin to grow, you should provide 1-2" (2.5-5cm) of space between the top of plants and the light(s).**

For instructions, refer to the "*Raise Lamp Hood (Light[s])*" section in your *Quick Start Guide*.

If *Grow Bulb(s)* are too close to plants, the leaves may brown and burn. If they are too far away, your plants will "stretch" toward the light(s) and look unhealthy.

## Keep Your Garden Healthy

---

**Keeping a watchful eye on your Garden is not only a joy, but also a smart way to make sure your plants stay healthy.**

As your plants grow, you may see some dead or brown leaves. This is perfectly normal.

- Remove these leaves with scissors or pinch them off with your fingers.
- Cascading flowers sometimes have brown leaves on the underside. They will not harm your plant, but may be unsightly. To remove them, carefully lift up the cascade and pinch or cut off brown leaves.
- Keep *Grow Surface* clear of dead leaves.



## Check Plant Layout to Prevent Shading

To ensure each plant gets enough light and has room to grow, you may need to rearrange the *Seed Pods* in your AeroGarden. Within the first 3 to 4 weeks of planting your Garden you may start to notice variations in how fast or slow a plant grows and in plant habit (e.g., spreading or upright, feathery or dense leaves, bushy or cascading). If it looks like some plants are shading other plants, use the following guidelines to rearrange your *Seed Pods*.

- Slow Growing Plants will be shorter than other plants in your Garden – move them to **Front** openings.
- Bushy Plants have a somewhat rounded shape – move these plants to **Side** openings.
- Cascading Plants spread along the *Grow Surface* – move these plants to **Front** or **Side** openings.
- Upright Plants have a main stem and tend to branch out – move these plants to **Back** openings (or **Front Side** if there are more than 4 such pods in your Garden.)

*Continued on next page*

**Quick Start Guides available at:  
[www.aerogardensupport.com](http://www.aerogardensupport.com)**

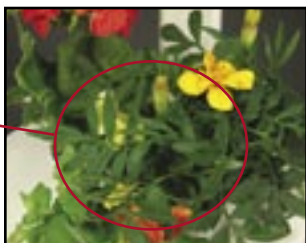
## Prune Plants to Prevent Shading

The following pages offer several pruning methods to prevent shading for a variety of flower types.

### Plants with Branching Leaves

To optimize the growth of your Garden and ensure strong plants with bountiful flowers, prune large leaves that shade other plants in your Garden.

- Remove large leaves or branches with scissors.



Marigold leaf shading smaller Mimulus.

- Prune where leaf or branch meets another stem.



*Photo at right shows how plant might look after pruning larger leaves. Notice that the Mimulus is no longer shaded.*



## **Plants with Leaves Growing from Base**

Calendula and Gazania are examples of flowers that should be pruned with this method.

- Remove large leaves that shade other plants with scissors.

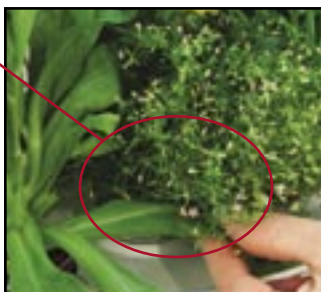


- Make cut at base of leaf.



- Tuck smaller leaves to give the shaded plant more light.

*Photo at right shows how plant might look after pruning larger leaves and tucking smaller leaves. Notice that the Calendula is no longer shading the Gypsophila.*



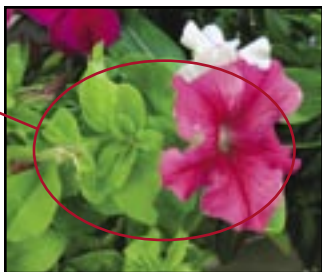
*Continued on next page*

# Keep Your Garden Healthy *(Continued)*

## Prune Plants to Prevent Shading *(Continued)*

### Plants with Long Stems

- Cut branches that shade other plants with scissors.



- Prune just above a set of leaves (growth point).



*Photo at right shows how plant might look after pruning long stems. Notice that the Petunia is no longer shading the Vinca.*



## **Remove Dead Flower Blossoms – *Deadheading***

Removing dead flower blossoms (deadheading) encourages your plant to produce more flowers. When blossoms begin to fade, wilt, wither, turn brown or just start to look unattractive, it's time to deadhead.

How often you'll need to deadhead depends on what's growing in your Garden. Some plants have short-lived blossoms that last less than a week, such as Mimulus and Dianthus. Others, such as Marigolds, have blossoms that remain attractive for weeks. Your eye is the best judge of when to deadhead.

Following are several methods of deadheading to be used for a variety of flower types.

### **Plants with Flowers Growing on Short Stems**

Dianthus, Diascia, Marigold, Mimulus, Petunia and Phlox are some examples of plants that do well with this method of deadheading.

- Pinch off entire flower blossom with fingers or cut with scissors.



*Continued on next page*

## Remove Dead Flower Blossoms – *Deadheading* *(Continued)*

### *Plants with Flowers Growing on Long Stems*

Calendula, Geranium, Lavender, Stock and Snapdragons are some examples of plants that do well with this method of deadheading.

- Cut flower stem at base.



### *Plants that Drop Spent Flowers and/or Have Many Small Flowers*

Gypsophila, Lobelia, Melampodium and Nemesia are some examples of plants that do not need deadheading.

- Some plants drop their spent flowers and need no deadheading.
- Deadheading plants with many small flowers (such as Gypsophila, *shown*) is tiresome and not recommended. Your plant will continue to bloom if dead flowers are left on the plant.
- Keep *Grow Surface* clear of dead blossoms.



## Helpful Hints...

### HELPFUL HINT #1:

Deadhead flowers as they start to fade to avoid accidentally removing unopened blossoms. At a quick glance, a flower bud (*petunia, shown at right*) can look like a dead blossom.



### HELPFUL HINT #2:

Deadhead flowers when light(s) are on. Some blossoms such as Gazania (*shown below*), close up when light(s) are off and can look like a dead blossom.



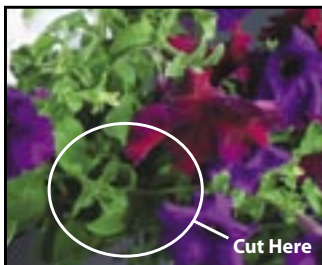
*Continued on next page*

# Keep Your Garden Healthy *(Continued)*

## Prune Heavy Branches to Keep Garden Neat and Compact

Some branches may become laden with so many blossoms that they droop over the edge of the Garden. To keep your plants compact:

- Cut heavy branches (as flowers begin to die) not more than 6" (15cm) from the tip with scissors or by pinching with fingers.
- Prune just above a growth point, where one or more leaves grow from the stem.
- After pruning your flowers, lower *Lamp Hood* if necessary. (see "*Raise Lamp Hood (Light[s])*" in *Quick Start Guide*).



# *P*lant Problems & Remedies

---

**These pictures show plants from a *Flower Series Seed Kit* that are stressed.** Follow suggestions to restore your Garden's health.



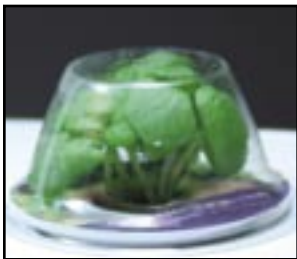
### **Wilted**

Plants are not getting enough water. Check water level.



### **Burned**

Plant is too close to *Grow Bulb(s)*. Raise the *Lamp Hood*.



### **Curled Inside *Dome***

*Dome* was left on too long. Immediately remove *Dome*.

## Reminders About Planting Your Garden

---

Please use the **Quick Start Guide** included in your original AeroGarden box for more detailed setup instructions. If you no longer have your *Quick Start Guide*, you can find the latest version of it at... [www.aerogardensupport.com](http://www.aerogardensupport.com).

### Setting up Your Garden

- 1 Is the *Lamp Arm* firmly inserted into the *Base*?
- 2 Are *Grow Bulb(s)* firmly inserted into *Lamp Hood*?
- 3 Is *Lamp Cord* plugged into *Lamp Hood*?
- 4 Is *Bowl* securely placed in *Base*\*?
- 5 Is there water in *Bowl* up to "Fill To Here"?
- 6 Is *Lamp Hood* at lowest setting?

### Planting Your Garden

- 7 Is there a *Seed Pod* in every *Grow Surface* opening?
- 8 Did you put a *Dome* on each *Seed Pod*?

- 9 Did you add *Starting Nutrient* tablet(s)?
- 10 Did you record planting date on the cover of this Guide?

### Starting Your Garden

- 11 Did you plug in AeroGarden?
  - Are *Grow Bulb(s)* on?

### Replanting Your Garden (if this is not your first planting)

- 12 Did you reset the nutrient timer on your AeroGarden? (See "Replanting Your AeroGarden" in *Quick Start Guide*.)

\* If your AeroGarden has an *Air Hose*, connect it to the *Bowl* at this time.

## Questions & Answers – Light(s)

---

### **Do I need to turn light(s) on and off manually?**

No. Your AeroGarden includes a built-in timer that turns your light(s) on and off at specific intervals. These intervals are designed to maximize the growth of your flowers. The timing system started as soon as you plugged in your AeroGarden.

### **Does it matter what time of day the light(s) go off?**

**Yes.** Flowers require a daily dark period in order to produce blossoms. For optimum growth conditions, we recommend that you set your AeroGarden light(s) to be on during the day and off at night.

### **Can I change the time of day the light(s) go OFF?**

On select models – yes. If it is possible to change the time your light(s) go off, instructions will be found in the “*Personalize Your Light Timer*” section of your *Quick Start Guide*.

## Set Your Light Timer

---

**Your AeroGarden has light(s) and a built-in timer that automatically provide your plants with the optimal amount of light needed to grow many beautiful flowers.**

If the option is available to set the light timer\* on your AeroGarden, you will find instructions in the “*Personalize Your Light Timer*” section of your *Quick Start Guide*.

*\* Not available on all AeroGarden models – consult Quick Start Guide – available at [www.aerogardensupport.com](http://www.aerogardensupport.com).*



Keep in mind that flowers need a daily dark period in order to produce blooms.

# Troubleshooting

---

## What do I do when a *Grow Bulb* burns out?

Replacement bulbs can be ordered from your retailer or at [www.aerogardensupport.com](http://www.aerogardensupport.com).

## What should I do if my *Grow Bulb(s)* aren't working?

Make sure *Grow Bulb(s)* are firmly inserted in the *Lamp Hood*. Also check that your Garden is plugged into a working electrical outlet and the *Lamp Cord* is plugged into the *Lamp Hood*.

## What if I want to move my Garden to another location?

Go right ahead! Keep in mind that each AeroGarden model has different features. Unplugging a Garden in the middle of its growth cycle could cause your AeroGarden's light timer to reset. *Before moving your AeroGarden, consult your Quick Start Guide to see how light timer is affected when your model is unplugged.*

To move your AeroGarden, be sure to pick it up by holding the *Lamp Arm* with one hand and sliding your other hand under the bottom of the *Base*.

## My Garden doesn't look healthy. What can I do?

If you are concerned about the health of your Garden, please go through the following...

- Keep light(s) as close to plants as possible, without leaves touching the *Grow Bulb(s)*.
- Replace *Grow Bulb(s)* every 6 months (see *Quick Start Guide* for model-specific instructions).
- Make sure your plants have a daily dark period, as described in the "Note" on page 2 of this guide.
- Follow the "Keep Your Garden Healthy" instructions on pages 5-13 of this guide.
- Don't use softened or well water.
- Continually remove dead leaves and flowers.
- Prune heavy branches to keep plants full and healthy.

### **What if I see bugs?**

Occasionally, bugs might decide to visit your flowers. If you see bugs, you will probably see aphids or spider mites which probably found their way into your home on clothing or cut flowers. They are clever about hiding under leaves and in the joints between leaves and plant stems, so they can be difficult to see at first.

Initial signs that you have aphids are either your plants look unhealthy or you may see a sticky substance on your AeroGarden's *Grow Surface*. Spider mites look like tiny gray dots on the underside of leaves. Heavy infestation will leave noticeable webs on the tops of plants.

This is the easiest way we've found to get rid of bugs:

- 1** Prepare a solution of non-toxic insecticidal soap, available at most gardening stores – following manufacturer's directions.
- 2** Lightly spray plant leaves with soap and gently rub leaves between fingers to coat entire leaf. If possible, avoid spraying buds and/or flowers.
- 3** Check surrounding plants to make sure the bugs haven't spread. If they have, follow the above steps with any other buggy plants.
- 4** Repeat as directed on the bottle of insecticidal soap.
- 5** Keep a watchful eye on plants for the return of bugs and treat again, if necessary.

*Continued on next page*

## Troubleshooting *(Continued)*

---

### **How do I take care of my Garden when I go out of town?**

Add water to raise the level up to “*Fill To Here.*” A newly planted Garden with *Domes* removed may not need care for up to 2 weeks. However, if your Garden is mature and you will be out of town for several days, we recommend that you make arrangements for someone to care for your Garden while you are away.

### **What do I do when my Garden has completed its growth cycle?**

For step-by-step instructions regarding the care of your AeroGarden after plants have stopped growing, refer to the “*Prepare for your Next Garden*” page in the *Quick Start Guide*.

**Quick Start Guides available at:  
[www.aerogardensupport.com](http://www.aerogardensupport.com)**

## Replace Bulb(s)

---

**Grow Bulb(s) should be replaced after 6 months of use.** See “*Replace Grow Bulb(s)*” in your *Quick Start Guide* for replacement instructions.

*Replacement bulbs can be ordered from your retailer or at [www.aerogardensupport.com](http://www.aerogardensupport.com).*



*The* **AeroGarden**<sup>™</sup>  
AeroGrow International, Inc.

**Quick Start Guides available at:**  
**[www.aerogardensupport.com](http://www.aerogardensupport.com)**